

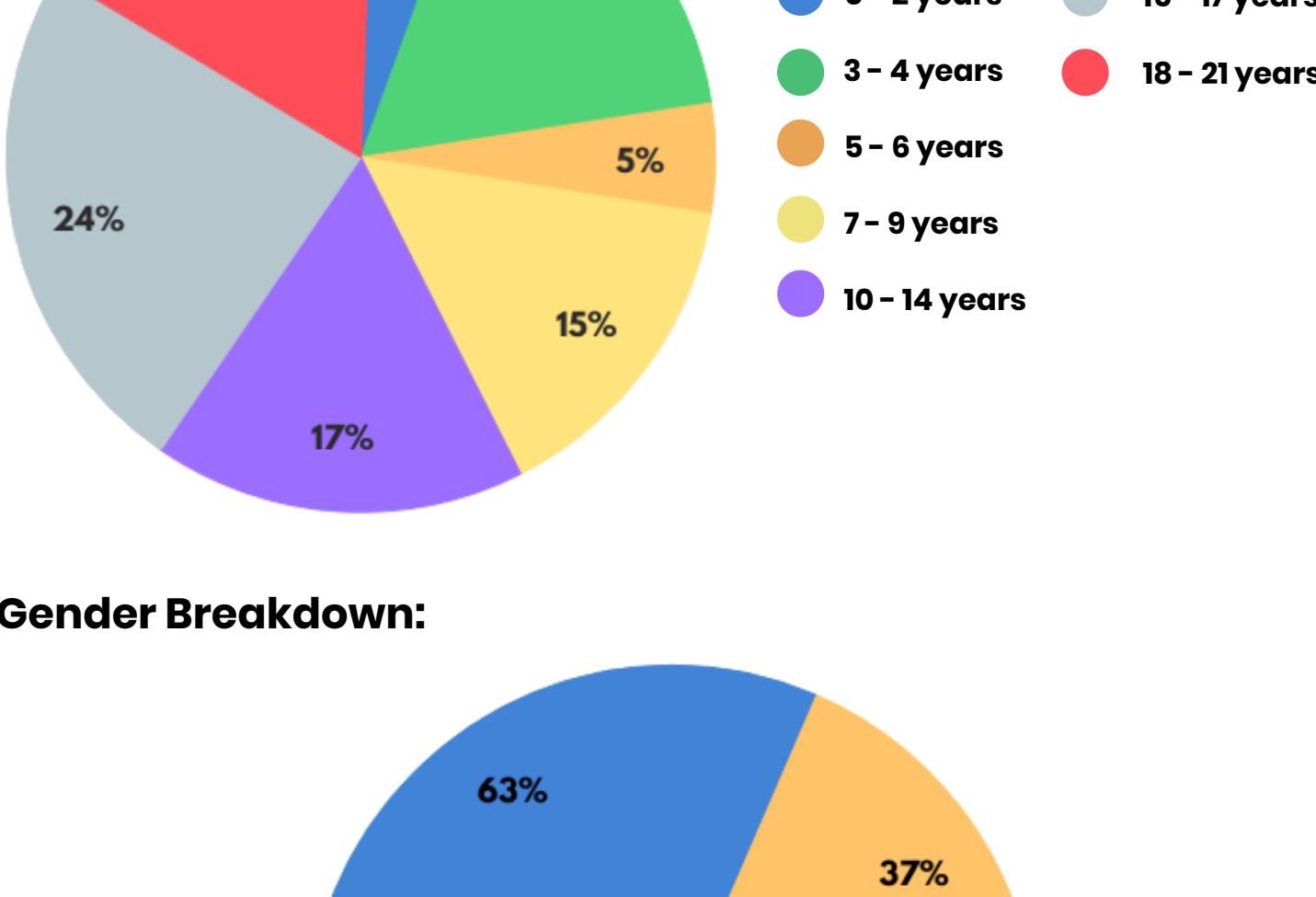
KENNEDY KRIEGER INSTITUTE: BRAIN INJURY INPATIENT PROGRAM OUTCOME DATA



FY 22

Who is treated in the Brain Injury Inpatient Program at Kennedy Krieger?

During fiscal year 2022*, 41 patients with traumatic or non-traumatic brain injury were discharged by the Brain Injury Inpatient Program at Kennedy Krieger.



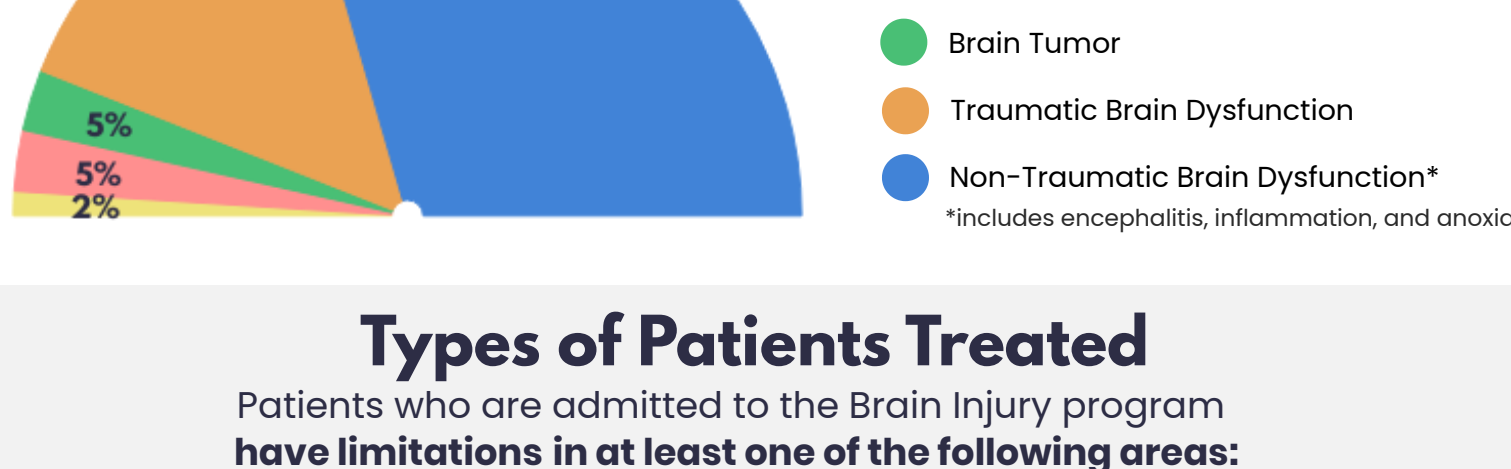
Gender Breakdown:



Diagnoses Treated

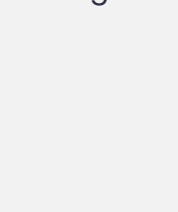
The Brain Injury Program treats children and adolescents who, collectively, have a variety of diagnoses.

Breakdown of the most common diagnoses treated by the Brain Injury Program:



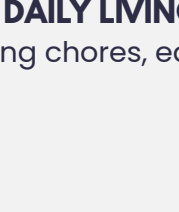
Types of Patients Treated

Patients who are admitted to the Brain Injury program have limitations in at least one of the following areas:



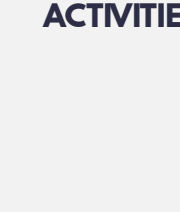
COMMUNICATION

(Understanding and speaking)



ENGAGING IN ACTIVITIES OF DAILY LIVING

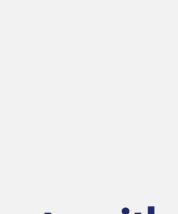
(Doing chores, eating)



PARTICIPATING IN HOME, SCHOOL AND COMMUNITY ACTIVITIES



MOVING AROUND



PERFORMING DAILY SELF-CARE ACTIVITIES

Patients who are admitted to the Brain Injury program must be medically stable and able to tolerate at least three hours of therapy per day.

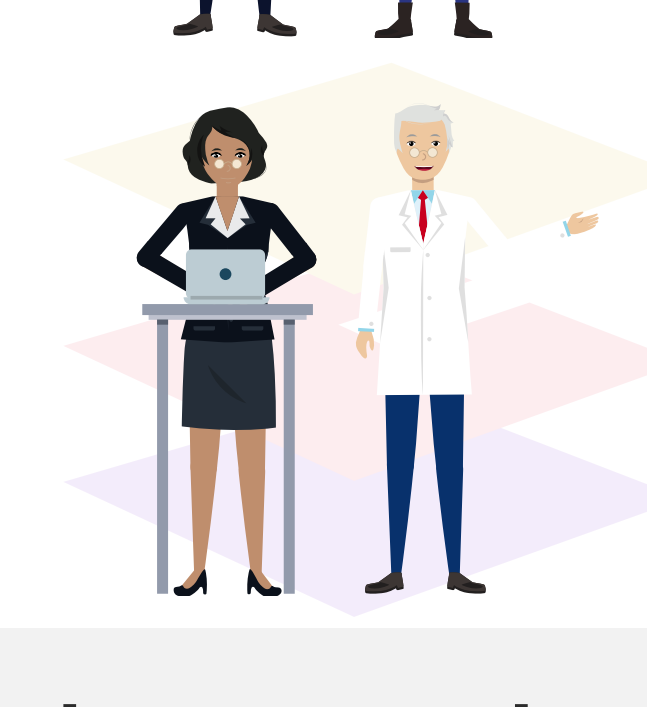
Patients with tracheostomies and those requiring mechanical ventilation or diaphragm pacing systems are welcome on the inpatient unit.

Interdisciplinary Treatment Team

Patients with brain injury may have complex needs. An experienced interdisciplinary treatment team works with every patient and their family.

This inpatient team may include:

- Assistive technology professionals
- Behavioral psychologists
- Child life therapists
- Developmental pediatricians
- Hospitalists
- Neurologists
- Neuropsychologists
- Nurse care managers
- Nurse practitioners
- Nurse technicians
- Nurses
- Occupational therapists
- Occupational therapists
- Pediatric nutritionists
- Pediatricians
- Physiatrists
- Physical therapists
- Registered nurses
- Seating and mobility specialists
- Social workers
- Special educators
- Speech-language pathologists
- Therapeutic recreation therapists

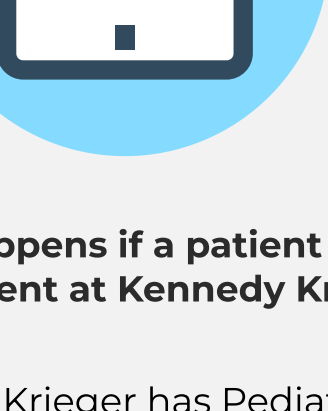


Where do patients live who are seen by the inpatient Brain Injury Program?



In fiscal year 2022, **66%** of brain injury patients came from **Maryland**, with **29%** coming from the surrounding states of **Washington, DC, Virginia, Pennsylvania and Delaware**.

The remaining **5%** came from **outside the region**.*

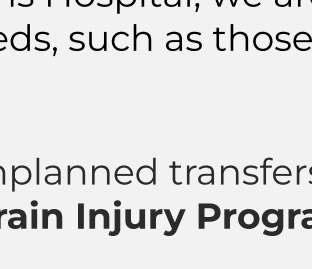


How much therapy do patients receive while being treated in the Brain Injury Program?

Patients being treated in the inpatient Brain Injury program have **at least three hours of therapy daily**.

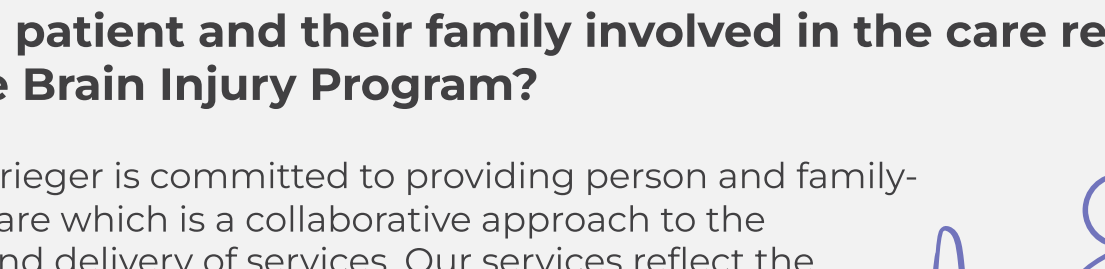
What happens if a patient gets acutely sick or has a medical emergency while an inpatient at Kennedy Krieger?

Kennedy Krieger has Pediatric Advanced Life Support-certified staff on-site 24 hours a day, seven days a week, with the equipment and processes in place to respond to medical emergencies.



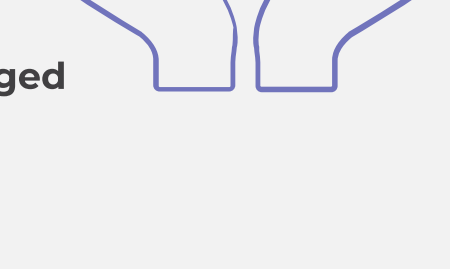
Due to our proximity to and affiliation with The Johns Hopkins Hospital, we are able to admit patients with intensive, but stable medical needs, such as those requiring a ventilator for breathing.

Occasionally, these more intensive medical needs require unplanned transfers to acute care. **In fiscal year 2022*, 1 patient in the inpatient Brain Injury Program required an unplanned transfer to an acute care setting.**



How is a patient and their family involved in the care received from the Brain Injury Program?

Kennedy Krieger is committed to providing person and family-centered care which is a collaborative approach to the planning and delivery of services. Our services reflect the person and family-centered care principles of participation; collaboration; information sharing; dignity and respect; and equity, diversity and inclusion.



Individuals served and their family members are encouraged to participate in treatment planning, goal setting, family meetings, and education and training sessions.

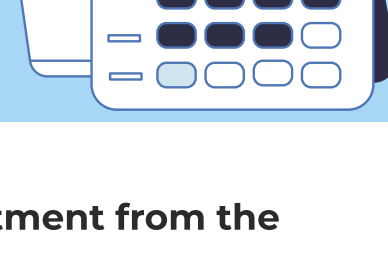
How long do most inpatients receive treatment from the Brain Injury Inpatient Program?

Treatment varies from one patient to another, based on their needs and goals.

In fiscal year 2022*, the average length of stay on the inpatient unit for all patients with brain injury was 38 days.



These lengths of stays are similar to the length of stays at other pediatric rehabilitation hospitals nationwide.



What kinds of improvements might patients receiving treatment from the Brain Injury Program be expected to make?

Kennedy Krieger Institute uses The Functional Independence Measure for Children (WeeFIM) for standardized pediatric outcome measurement. This system is used by pediatric inpatient, outpatient, and community-based rehabilitation programs worldwide and provides a simple, consistent, uniform tool that measures function in children.

Patients made improvements in their self-care skills and mobility skills that were similar or exceeded improvements made at other pediatric rehabilitation hospitals nationwide.

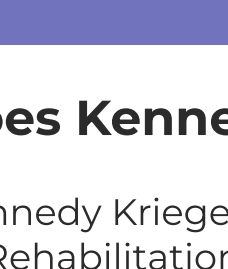
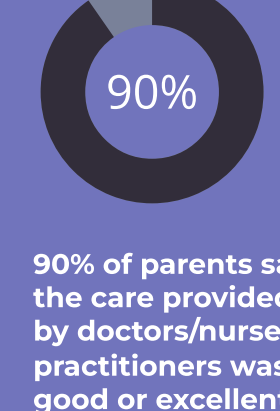
92% of patients met or exceeded their WeeFIM goals



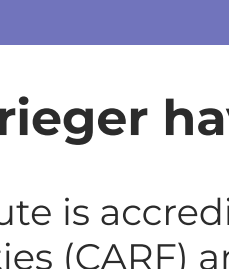
90% of patients were discharged to home



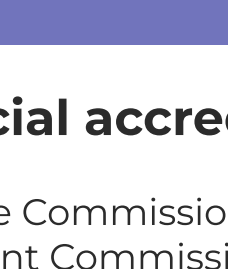
What do patients and their families say about their experience at Kennedy Krieger Institute?



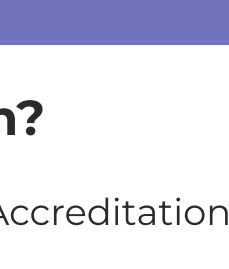
93% of parents said the care provided by registered nurses (RNs) was good or excellent



95% of parents said the safety of their child was good or excellent.



93% of parents said the overall services provided were good or excellent.



90% of parents said the care provided by doctors/nurse practitioners was good or excellent

Does Kennedy Krieger have special accreditation?

Kennedy Krieger Institute is accredited by the Commission on the Accreditation of Rehabilitation Facilities (CARF) and The Joint Commission.

Every three years, both organizations review the Institute to ensure all its programs meet or exceed the very high standards it sets for the care of its patients.



*FY 22 represents the dates from July 1, 2021 to June 30, 2022