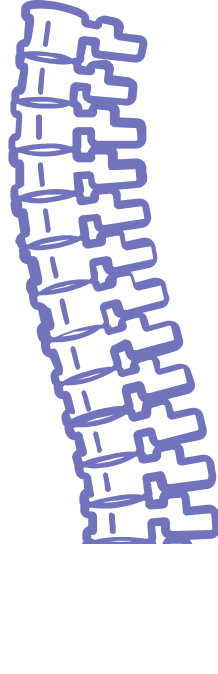


KENNEDY KRIEGER INSTITUTE: ADULT OUTPATIENT SPINAL CORD INJURY OUTCOME DATA

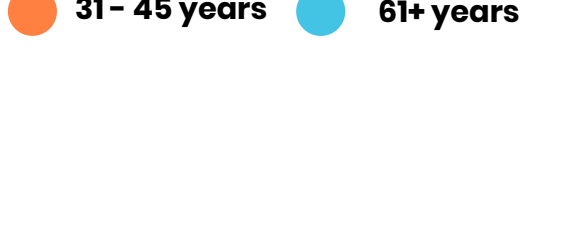


FY 22

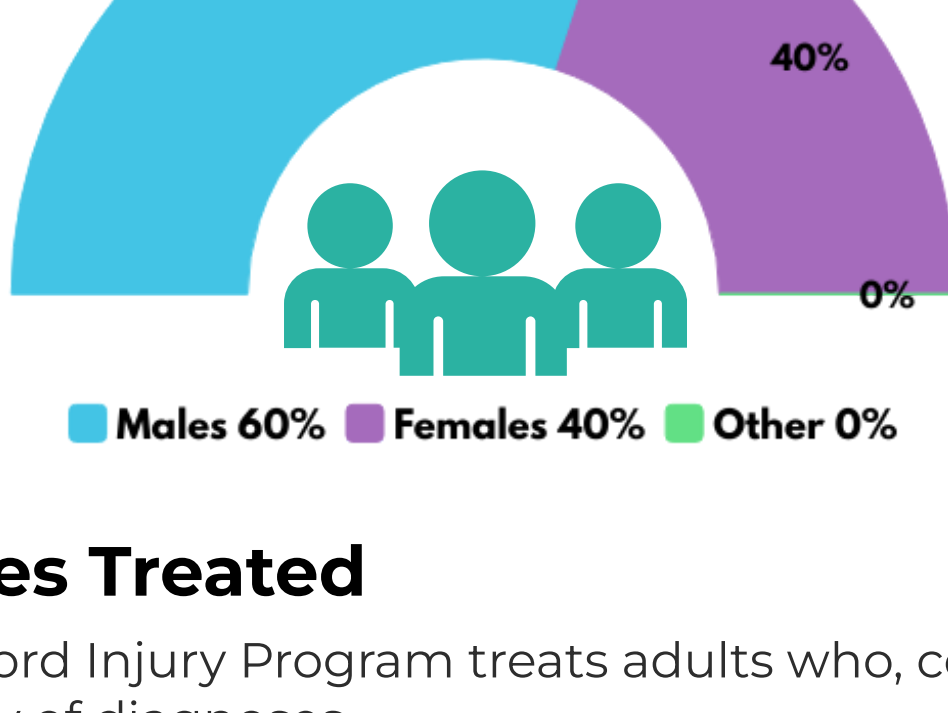
Who is treated in the Spinal Cord Injury Program at Kennedy Krieger?

During fiscal year 2022*, 575 adults with spinal cord injuries were treated by the Spinal Cord Injury Program.

Age breakdown of patients:



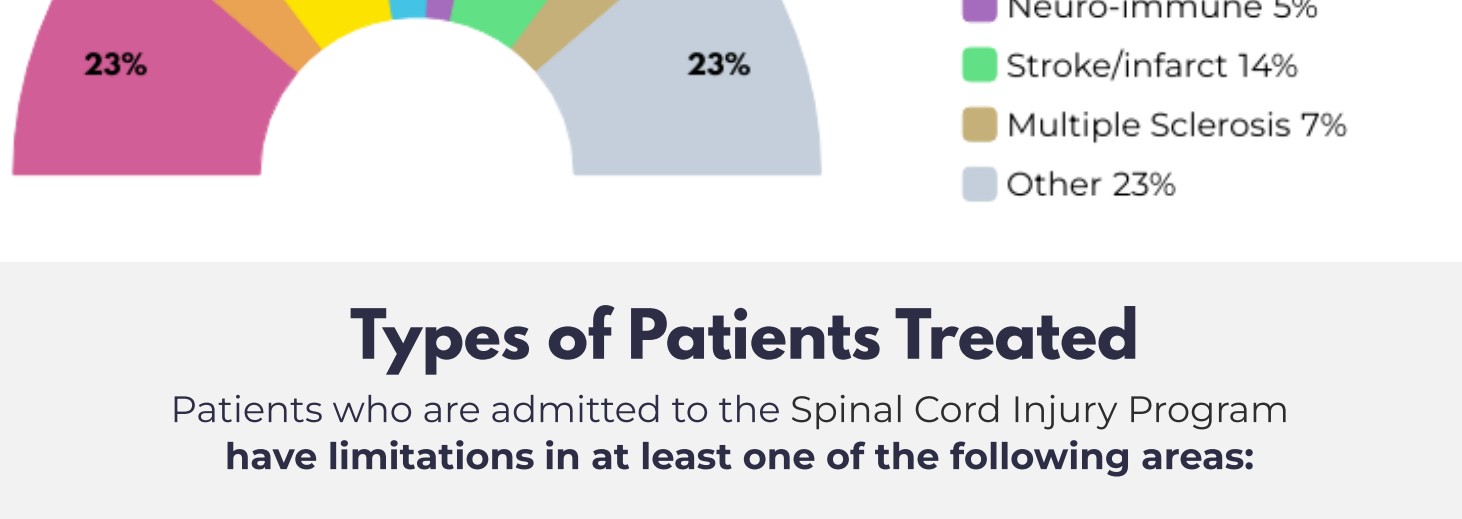
Gender Breakdown:



Diagnoses Treated

The Spinal Cord Injury Program treats adults who, collectively, have a variety of diagnoses.

Below is a breakdown of the most common causes of spinal cord dysfunction treated by the Spinal Cord Injury Program:



Types of Patients Treated

Patients who are admitted to the Spinal Cord Injury Program have limitations in at least one of the following areas:



Patients who are treated by the Spinal Cord Injury Program must be medically stable and able to participate in at least three hours of therapy per day.

Patients with tracheostomies and those requiring mechanical ventilation or diaphragm pacing systems are welcome.

Interdisciplinary Treatment Team

This inpatient team may include:

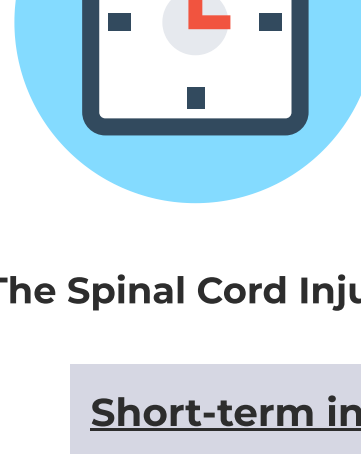
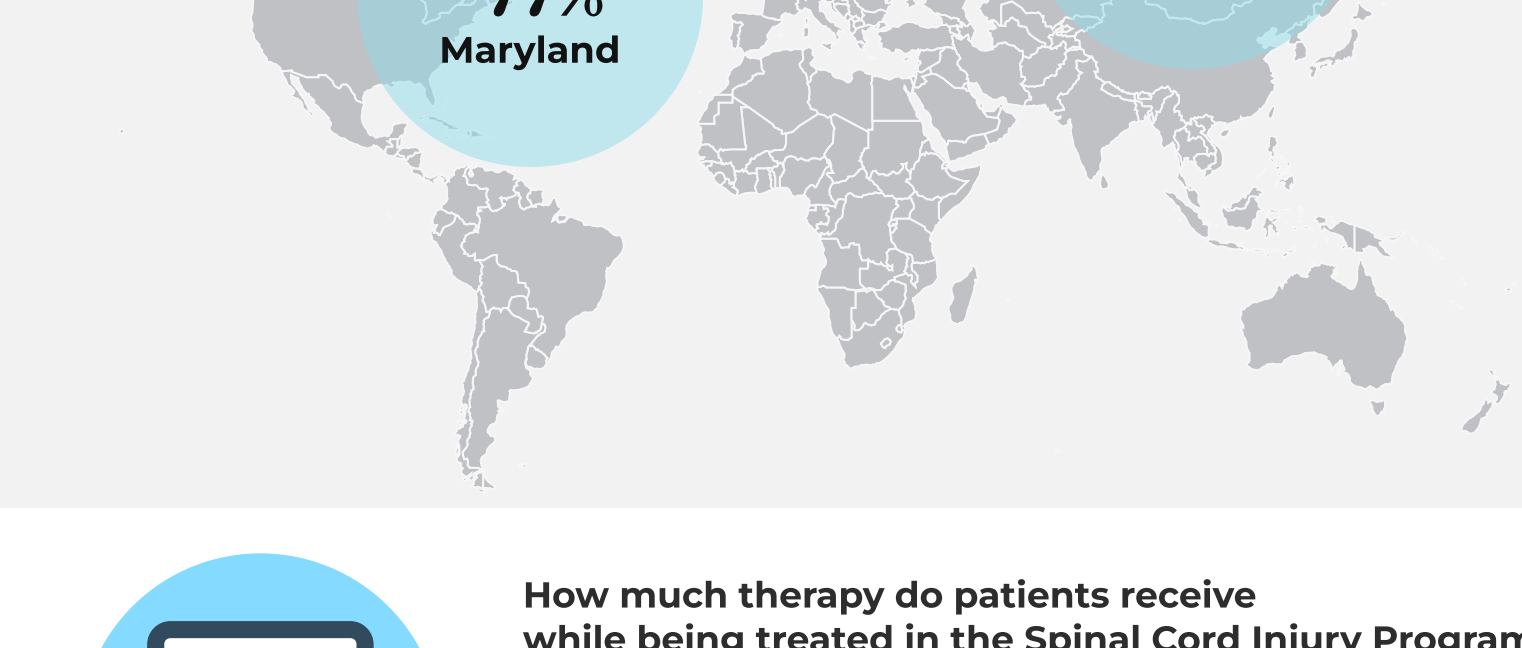
- Adaptive aquatic specialists
- Assistive technology professionals
- Nurse care managers
- Nurses
- Occupational therapists
- Orthotists
- Personal trainers
- Physiatrists
- Physical therapists
- Psychologists
- Registered nurses
- Seating and mobility specialists
- Social workers



When appropriate, the providers will refer patients to additional medical services at Johns Hopkins Hospital or other hospitals with expertise in the care of individuals with spinal cord injuries.

Where do patients live who are seen by the Spinal Cord Injury Program?

In fiscal year 2022, patients came from the following areas:



How much therapy do patients receive while being treated in the Spinal Cord Injury Program?

In the medically supervised outpatient therapy program, therapists work one-on-one with patients, focusing on achievement of goals set by the patient, physician and therapist. Patients who are treated by the Spinal Cord Injury Program must be medically stable and able to participate in therapy.

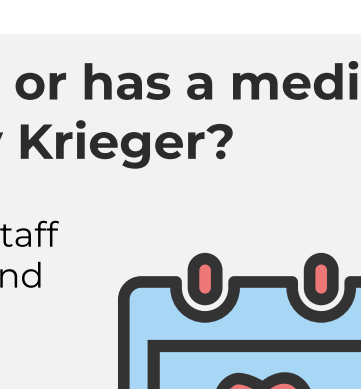
The Spinal Cord Injury Program offers two unique therapy options:

Short-term intensive therapy:
In this **five-day-a-week** program, patients typically attend therapy for **one to three weeks for two to three hours of therapy per day**. The length of therapy is based on the recommendations of your medical provider.

Extended intensive therapy:
In this program, patients typically attend therapy **one to three times per week for six to 12 weeks** and receive **one to four hours of therapy per day**. The length of therapy is based on the recommendations of your medical provider.

In addition, specialized **Aquatic Therapy is available** with either therapy option.

This specialized therapy **features innovative pools** with multiple jets, built-in treadmills, video systems, and floors that operate on lifts to allow barrier-free entry and exit for patients in wheelchairs.

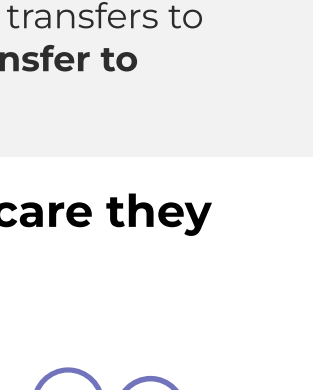


What happens if a patient gets acutely sick or has a medical emergency while an outpatient at Kennedy Krieger?

Kennedy Krieger has Pediatric Advanced Life Support-certified staff on-site 24 hours a day, seven days a week, with the equipment and processes in place to respond to medical emergencies.

Due to our proximity to and affiliation with The Johns Hopkins Hospital, we are comfortable treating patients with intensive, but stable medical needs, such as those requiring a ventilator for breathing.

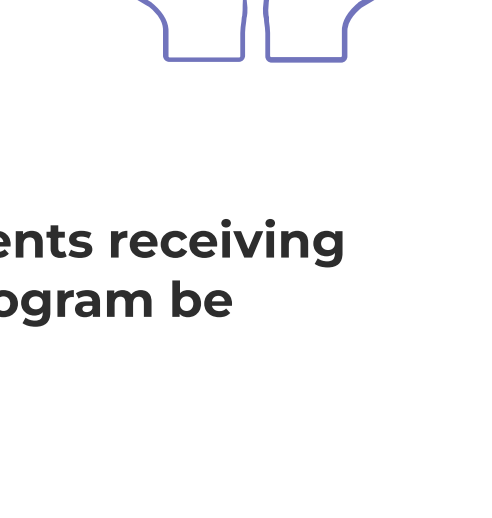
Occasionally, these more intensive medical needs require unplanned transfers to acute care. **Seven patients had medical emergencies requiring transfer to The Johns Hopkins Hospital in FY 22.**



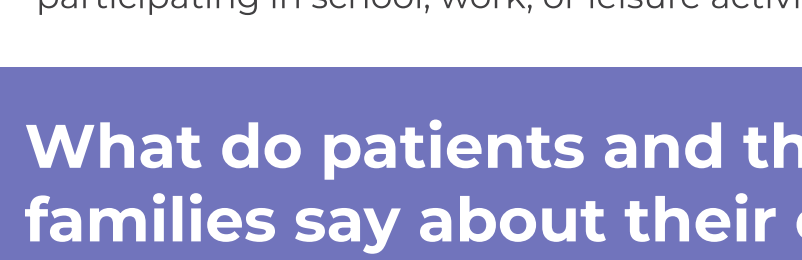
How are patients and their families involved in the care they receive from the Spinal Cord Injury Program?

Kennedy Krieger is committed to providing person and family-centered care which is a collaborative approach to the planning and delivery of services. Our services reflect the person and family-centered care principles of participation; collaboration; information sharing; dignity and respect; and equity, diversity and inclusion.

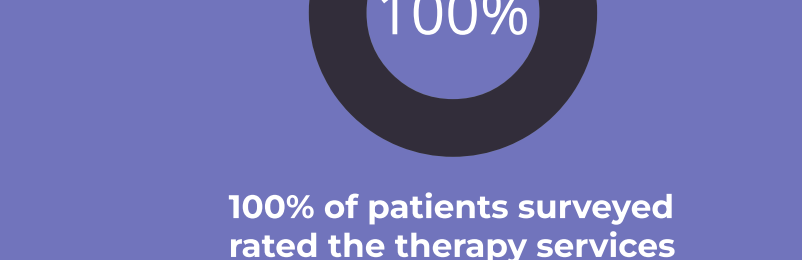
Individuals served and their family members are encouraged to participate in treatment planning, goal setting, family meetings, and education and training sessions.



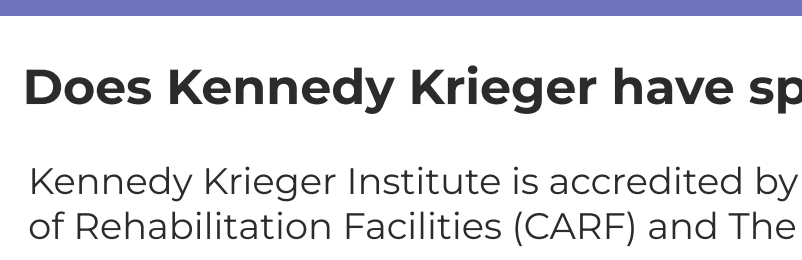
What kinds of improvements might patients receiving treatment from the Spinal Cord Injury Program be expected to make?



100 percent of patients whose charts were reviewed were independent or showed improvement in functional mobility, activities of daily living, or strength during their admission.



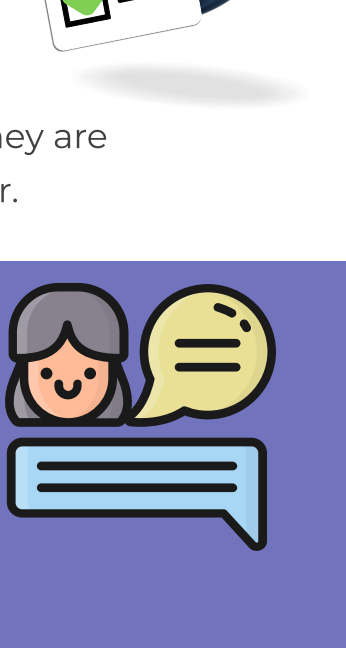
97 percent of patients surveyed had no unplanned hospitalizations.



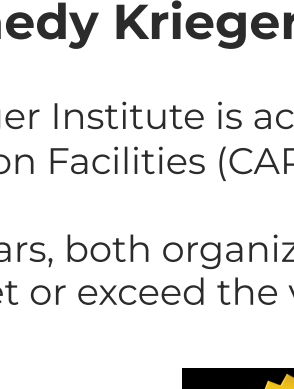
97 percent of patients surveyed remained living in the community.



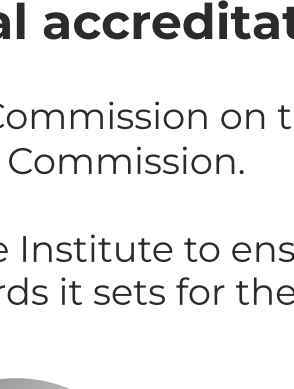
95 percent of patients whose charts were reviewed indicated that they are participating in school, work, or leisure activities during the past year.



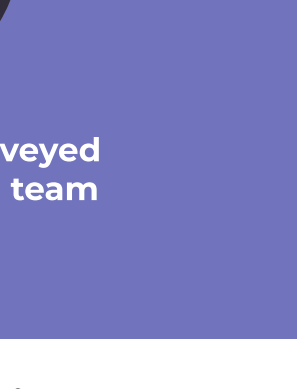
What do patients and their families say about their experience at Kennedy Krieger Institute?



100% of patients surveyed rated the therapy services they received as excellent



97% of patients surveyed rated their medical team as superior



Does Kennedy Krieger have special accreditation?

Kennedy Krieger Institute is accredited by the Commission on the Accreditation of Rehabilitation Facilities (CARF) and The Joint Commission.

Every three years, both organizations review the Institute to ensure all its programs meet or exceed the very high standards it sets for the care of its patients.



*FY 22 represents the dates from July 1, 2021 to June 30, 2022.