

The Center for Diversity in Public Health Leadership Training at Kennedy Krieger Institute

Undergraduate Scholars' Programs
MCHC/RISE-UP
MCH-LEARN

Mentor's Session



Center for Diversity in
Public Health Leadership Training
at Kennedy Krieger Institute



Kennedy Krieger Institute

Office for Health, Equity, Inclusion, & Diversity

The **vision** of the O-HEID is to promote the health and well-being of all those who work or receive training, education, or services at Kennedy Krieger, using evidence- and equity-based, culturally relevant approaches that assure diversity and inclusion.

❑ The Center for Diversity in Public Health Leadership Training is O-HEID's Training Center.



Center for Diversity in
Public Health Leadership Training
at Kennedy Krieger Institute



Kennedy Krieger Institute



Center for Diversity in Public Health Leadership Training (Center for Diversity)

To develop diverse scholars and leaders who use culturally relevant, evidence-based, and health equity approaches to inform research, practice, advocacy, and policy to promote optimal infant, child, and youth nervous system development.





Center for Diversity in
Public Health Leadership Training
at Kennedy Krieger Institute



Kennedy Krieger Institute



Center for Diversity Programs

□ Educational opportunities are funded by the Centers for Disease Control and Prevention, Office of Minority Health and Health Equity (CDC), Health Resources and Services Administration (HRSA), and the Department of Health and Human Services (DHSS), Office of Minority Health.

1. Dr. James A. Ferguson Emerging Infectious Diseases RISE Fellowship

2. EMURG Health Equity Leadership Fellowship

3. MCHC-RISE-UP

4. MCH-LEARN





Educational Topics and Priorities

- ❑ Public health experiences focus on public health challenges and the elimination of health disparities
 - ❑ Disabilities
 - ❑ CDC Priority Areas
 - ❑ Political and Social Determinants of Health
 - ❑ Infectious Diseases
 - ❑ Maternal Child Health Issues
 - ❑ LGBTQI Health
 - ❑ Mental Health and Drug Dependence
 - ❑ Men's Health
 - ❑ Health Policy





What we do!

- ❑ Recruit students annually from diverse populations to participate in activities to address ongoing and emerging health challenges and areas of health disparities.
- ❑ Provide didactic interdisciplinary core curricula, externships, and fellowships that incorporate public health competencies to prepare scholars to be leaders in the Public Health field.





What we do!

- ❑ Disseminate information that connects scholars and other professionals to evidence-based practices and new knowledge in the fields of public health.
- ❑ Increase scholars from underrepresented populations who select maternal and child health and public health careers.





Applications Go Live October9!

[The Center for Diversity in Public Health Leadership Training | Kennedy Krieger Institute](#)



Center for Diversity in
Public Health Leadership Training
at Kennedy Krieger Institute



Kennedy Krieger Institute

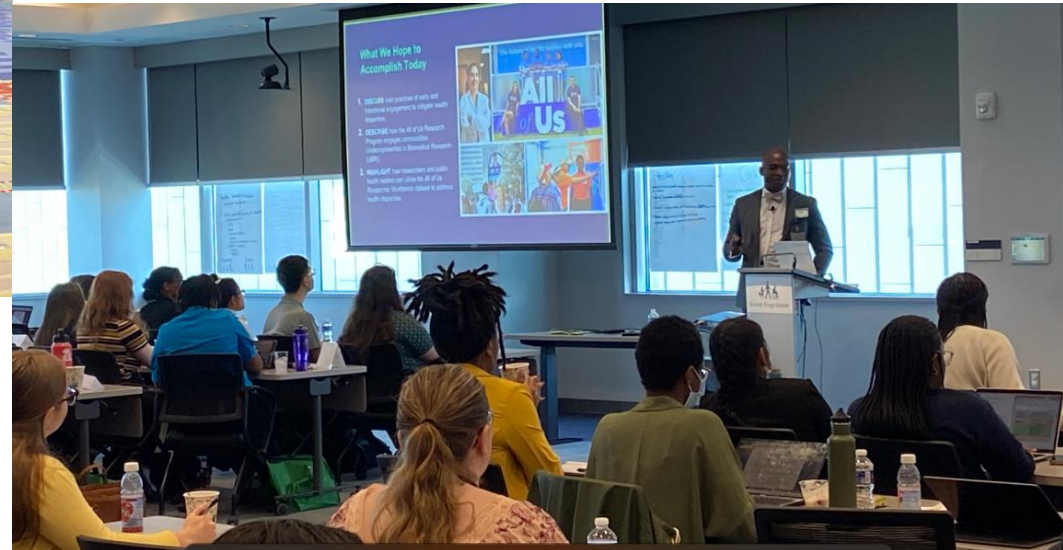


Public Health Research and Career Exploration

- ❑ Core public health knowledge focusing on health disparities & social and political determinants of health
- ❑ Infectious Diseases and health disparities research experiences
- ❑ Weekly public health research leaders
- ❑ Professional and research development through mentoring
- ❑ Abstract writing
- ❑ Presentation experience
- ❑ Peer-reviewed publications
- ❑ Leadership experience (e.g., near-peer mentoring)
- ❑ Networking/Employment opportunities



Undergraduate Programs



Maternal and Child Health Careers/Research Initiatives for Student Enhancement Undergraduate Program (MCHC/RISE-UP)



Center for Diversity in
Public Health Leadership Training
at Kennedy Krieger Institute



Kennedy Krieger Institute

MCHC-RISE-UP

- Be currently enrolled as a rising junior or senior or received their baccalaureate degree within 12 calendar months of the MCHC/RISE-UP program orientation.
- Have a cumulative GPA of 2.7 or better on a 4.0 scale.
- Be a US citizen, US National, Permanent Resident.
- Be able to commit to participate in program activities for the length of the MCHC/RISE-UP.
- MCHC/RISE-UP Application Opens:** Monday, October 9th, 2023
- MCHC/RISE-UP Application Deadline:** Wednesday, January 31st, 2024 (11:59 PM EST)



Mentors Needed

- Three Public Health Leadership Tracks**
 - Clinical**
 - Community Engagement and Advocacy**
 - Research**



MCHC-RISE-UP

- ❑ Centers for Disease Control and Prevention (CDC) John R. Lewis Undergraduate Public Health Scholars Program
- ❑ Undergraduate juniors and seniors, and baccalaureate degree scholars
- ❑ MCHC/RISE-UP Public Health Leadership Experiences:
 - ❑ Clinical
 - ❑ Community Engagement & Advocacy
 - ❑ Research
- ❑ Four sites:
 - ❑ Aaniiih Nakoda College/Fort Belknap Community/Tribal Colleges and Universities (TCU)
 - ❑ Kennedy Krieger Institute
 - ❑ University of California Davis
 - ❑ University of South Dakota
- ❑ Campus Housing
 - ❑ Kennedy Krieger Institute
 - ❑ University of California Davis
 - ❑ University of South Dakota





MCHC-RISE-UP

- ❑ National Consortium of AUCD Member Institutions
 - ❑ Kennedy Krieger Institute/Johns Hopkins Medical Institutions
 - ❑ Historically Black Colleges and Universities
 - ❑ University of South Dakota
 - ❑ Tribal Serving Institutions
 - ❑ University of California-Davis
 - ❑ MIND Institute
 - ❑ Aaniiih Nakoda College/Fort Belknap Community



MCHC-RISE-UP Summer 2024

- ❑ All MCHC-RISE-UP Scholars
 - ❑ Orientation In-Person: Monday, May 27, 2024 - Friday, May 31, 2024
- ❑ Public Health Experiences: Monday, June 3, 2024 - Friday, July 26, 2024
 - ❑ Aaniiih Nakoda College, Kennedy Krieger Institute, & University of South Dakota
- ❑ Public Health Experiences: Monday, June 17, 2024-Friday, July 26, 2024
 - ❑ University of California Davis program
- ❑ All scholars participate in the CDC Showcase and Expo on July 29-31, 2024



Aaniih Nakoda College



*Ms. Kim Brockie, Aaniiih Nakoda College

*Ms. Mina Kazemi, MSc, Sr. Research Program Coordinator

*Dr. Teresa Brockie, Director

Direct questions to:
mchc-rise-up@kennedykrieger.org

Thank you!

Fort Belknap



Kennedy Krieger Institute



California Faculty

Janice Enriquez, PhD, Site Director

University of California- Davis MIND Institute

Child Development Division Multicultural Council Representative

Mercedes Piedra, MS

Director of Multicultural Education

University of California -Davis

Direct questions to:

mchc-rise-up@kennedykrieger.org

Thank you!



Kennedy Krieger Institute



South Dakota Faculty

Ann Wilson, Ph.D., Site Director

Senior Research Associate

Marni Johnson, Au.

University of South Dakota

Direct questions to:

mchc-rise-up@kennedykrieger.org

Thank you!



Kennedy Krieger Institute



Maternal and Child Health Leadership Education Advocacy Research Network (MCH-LEARN)



Center for Diversity in
Public Health Leadership Training
at Kennedy Krieger Institute



Kennedy Krieger Institute



MCH-LEARN

- ❑ Local Baltimore-Washington, DC Undergraduate Freshman and Sophomores
 - ❑ No campus housing provided
- ❑ Interested in MCH professions (pediatric medicine, nutrition, social work, nursing, pediatric dentistry, psychology, health education, pediatric occupational/physical therapy, speech language pathology, public health)
- ❑ Grade Point Average: ≥ 3.0 on a 4.0 scale





MCH-LEARN Program Activities

- Research + Clinical/Community
- Program Learning Seminars
 - Health Disparities across the Life Course
 - Professional Development and Advocacy
 - CDC Winnable Battles
 - Public Health Leaders
- Family as Faculty Program
- Sponsored national conference presentation



Mentor Readiness

Enhancing Mentoring



Center for Diversity in
Public Health Leadership Training
at Kennedy Krieger Institute



Kennedy Krieger Institute



Enhancing Mentoring Model



Mentoring throughout cultures

- Wise advisor; trusted friend
- Mentoring is a fundamental form of human development where one person invests time, energy and personal know-how in assisting the growth and ability of another person.

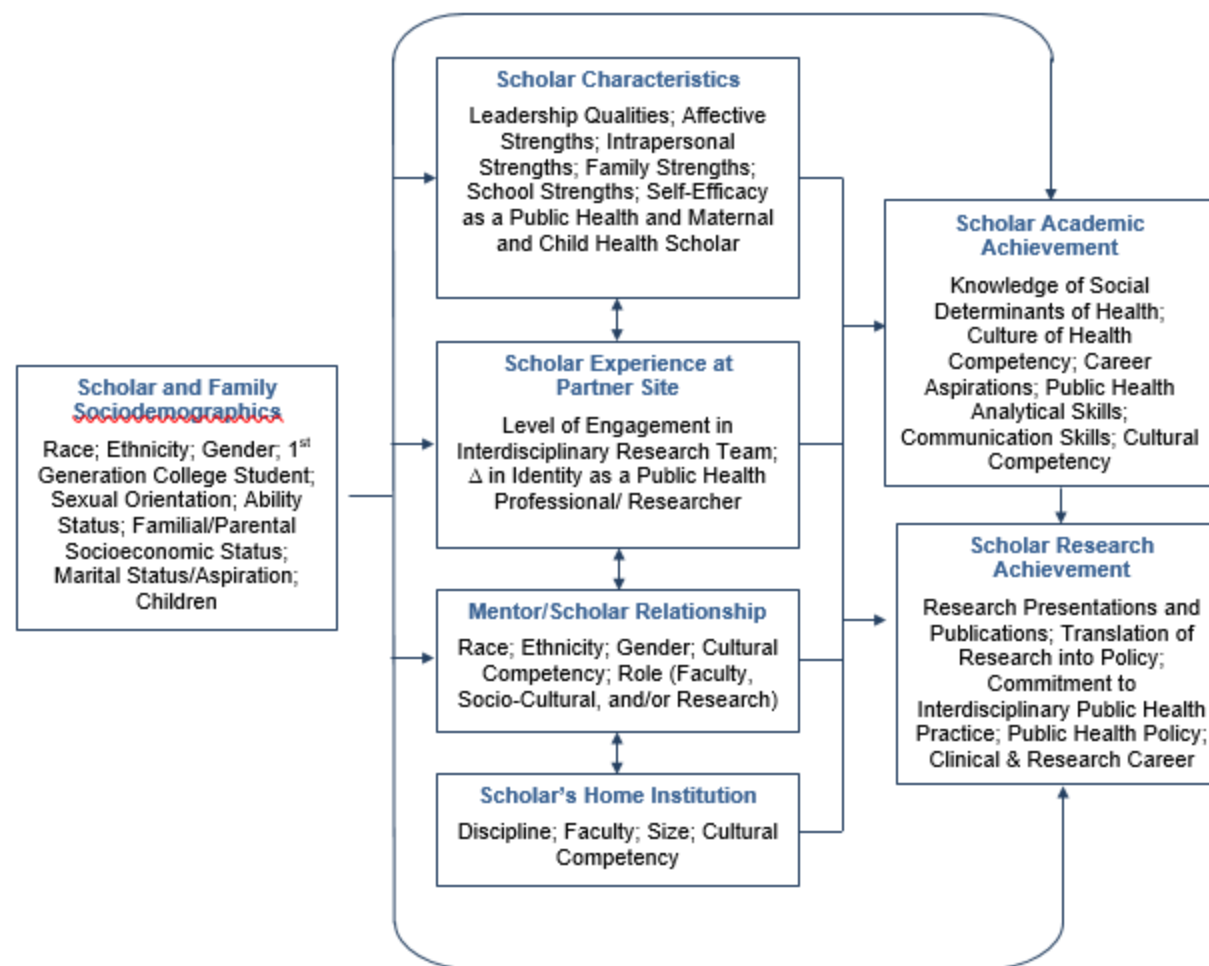


Mentorship

- Mentoring is a positive developmental partnership that provides a reflective space for the scholar
- Builds confidence within the scholar
- Mentors can help to navigate situations and clarify the scholar's perspective by providing an impartial view
- Confidentiality and trust are key to a successful partnership



Scholar Heuristic Model



Background & Environment of Scholars

Individual/Interpersonal Resources

- Aspirations
- Academic Self Efficacy
- Undergraduate and Graduate Education
- Post-Doctoral Training
- Prior Research Experience
- Personal Challenges
- Support From Family

Institutional Resources

- Institutional Support
- Support From Peers and Colleagues
- Type of Institution
- Formal Training/Programs
- Research Infrastructure



Academic and Scientific Development of Scholars

- Time Management
- Scientific Presentations
- Journal Articles
- Grant Writing
- Principal Investigator



Mentor Multiple Roles

- **Teacher/Tutor**
 - Provides scientific training
 - Orients scholar to organizational culture & professional skills
 - Locates resources
- **Counselor/Coach/Advisor**
 - Gives career and professional guidance
 - Feedback and support sounding board
 - Problem-solver
- **Intervener**
 - Intercedes on behalf of the scholar
 - Runs interference where needed
- **Sponsor**
 - Recommends and promotes career of scholar
- **Process mentors**
 - Guides in academic and career development but may not have expertise in science of career
- **Content mentors**
 - Guides in your scientific and conceptual development, but may not be good at process mentoring



Mentor Responsibilities

1. Meet regularly with the scholar to create a supportive and successful academic and research environment
2. Set academic and research expectations in collaboration with the scholar
3. Review progress with scholar
4. Ensure scholar is involved in networking activities
5. Prepare scholar for national research presentation
6. Encourage and collaborate on peer-reviewed publications



PHaSS-IDP

<https://www.careersinpublichealth.org/>

PHaSS-IDP

Home Assessments Dashboard Career Clusters My Plan About My Profile Sign Out

Build a Better Public Health Career

PHaSS-IDP is a free online career exploration and planning tool for all early career professionals, graduate and undergraduate students in public health and social sciences. In recent years, the graduate education community has begun to respond to the need for trainees to take a structured approach to their career planning and professional development. Frequently, the recommended approach is described as an Individual Development Plan (IDP). An IDP is simply a written set of goals designed to answer two important questions with the help of mentors:

BETA VERSION 1.2

Let's Get Started



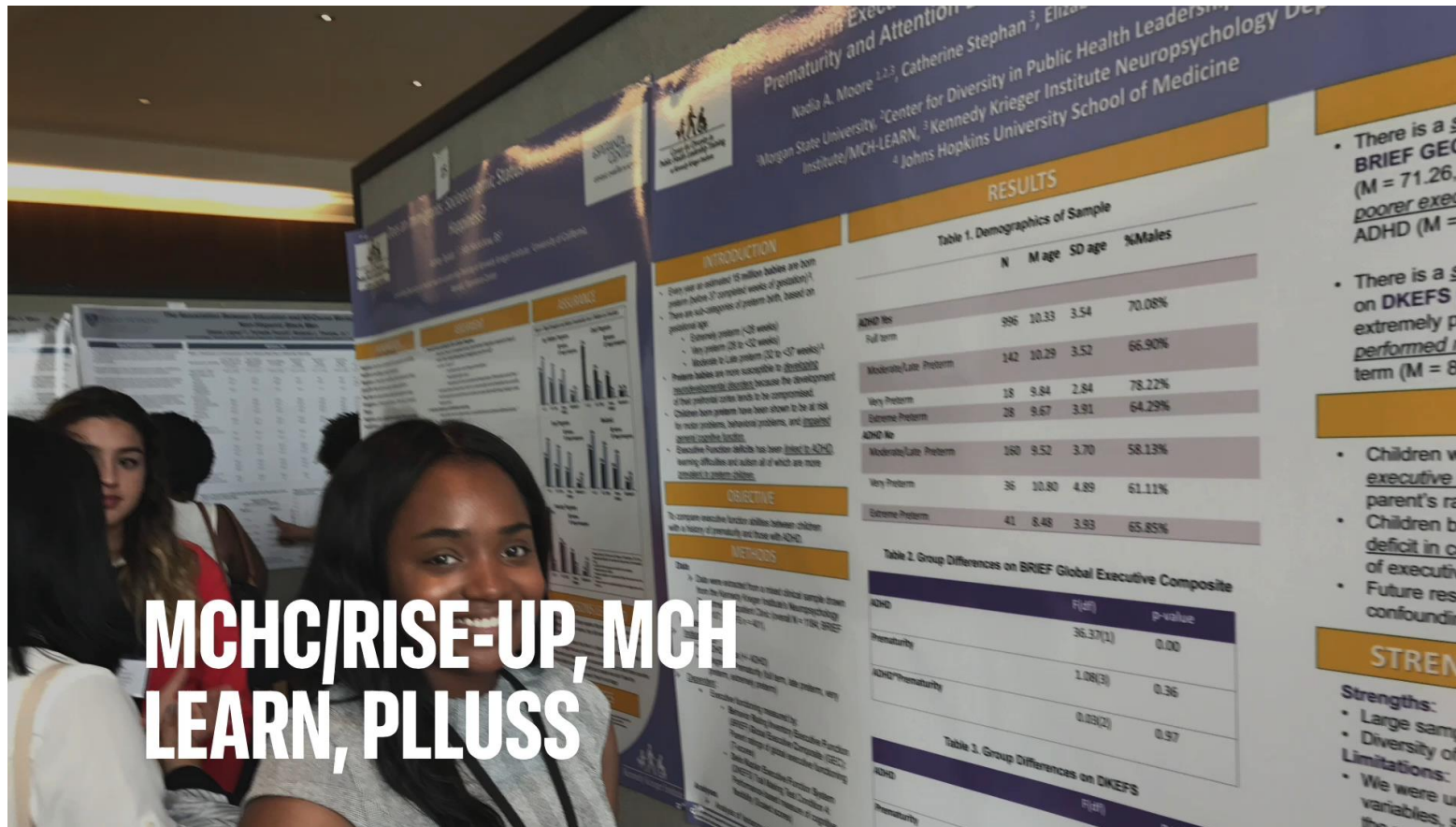
Kennedy Krieger Institute

Public Health and Social Sciences Individual Development Plan

- Self-Assessment
 - Skills
 - Tasks
 - Mission
 - Values
- Explore 20 Public Health Careers
- Develop SMART Academic and Career Goals
- Build Your Mentoring Team



This is what success looks like...



MCHC/RISE-UP, MCH LEARN, PLLUSS



Important Links

Program information

1. <https://www.kennedykrieger.org/training/programs/center-for-diversity-in-public-health-leadership-training>
2. <https://www.kennedykrieger.org/training/programs/center-for-diversity-in-public-health-leadership-training/mch-learn>
3. <https://www.kennedykrieger.org/training/programs/center-for-diversity-in-public-health-leadership-training/mchc-rise-up>

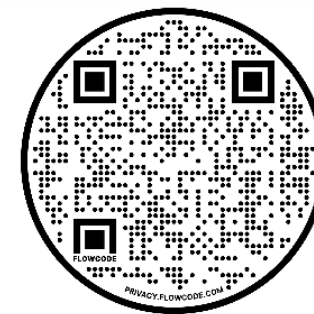
MENTOR AGREEMENT LINK: https://discover.kennedykrieger.org/jfe/form/SV_5A9JfuBecO6pnmK



Kennedy Krieger Institute



Any Questions?



Center for Diversity QR Code

Center for Diversity in Public Health Leadership Training

Harolyn M.E. Belcher, MD, MHS, *Director*

Luceta McRoy, PhD, *Assistant Director*

Kelly N. Little, BS, MHA, *Project Director*

Jamal Percy, MPA, CHES, MHFA, *Program Manager*

Kennedy Krieger Institute

www.kennedykrieger.org/centerfordiversity

Thank you!



Center for Diversity in
Public Health Leadership Training
at Kennedy Krieger Institute



Kennedy Krieger Institute